

Welcome to

APPLE **MEY 2022** MAXIMUM ECONOMIC YIELD

FEB 25



NUTRIAG
ACADEMY
Advanced Learning

NUTRIAG **Innovators**
in the field

Friday, February 25, 2022

12:00 PM Atlantic Standard Time (AST)

11:00 AM Eastern Standard Time (EST)

10:00 AM Central Time (CT)

08:00 AM Pacific Standard Time (PST)

11am-11:05	Welcome	Martin Bloomberg
11:05-11:35	Advanced Agronomy Topic	Lindsay Birch
11:35-12pm	New Products in the Pipeline	Dr. Mike Horvath
12pm-12:30	Lunch	
12:30-1:15	NutriAnalytics Update: AI in Fruitlet Sampling	Dr. Sebastian Margarit
1:15-1:55	Grower Panel – Modern Apple Production	
1:55-2:25	Atlantic Canada Trial Update	Lindsay Birch
2:25-2:35	Break	
2:35-3:05	NutriAg Technology	Dr. Tom Bajorek
3:05-3:50	EBN, MBOS, and Apple Colour Trials	Dr. Christopher Trobacher
3:50-4pm	Wrap up and Summary	Dr. Sebastian Margarit



OUR TEAM IS HERE TO HELP. LET'S TALK!

Prince Edward Island, Nova Scotia

MICHELLE - 902-439-5820

**New Brunswick, Maine, Vermont, New Hampshire,
Massachusetts, Connecticut, Rhode Island**

SEBASTIAN - 902-890-2067

**Eastern Ontario, Quebec, Pennsylvania,
New York, New Jersey, Delaware**

CHAD - 613-561-3307

South Western Ontario

BEN - 519-428-8242

Manitoba, Saskatchewan, Alberta

AARON - 306-270-3384

**Nebraska, Minnesota, Iowa, Wisconsin, Michigan,
Illinois, Indiana, Ohio**

CHRIS - 517-732-4628

**California, Nevada, Arizona, Utah, Colorado,
Kansas, Oklahoma, New Mexico, Texas**

MATT - 209-761-0839

**Missouri, Arkansas, Louisiana, Mississippi, Tennessee,
Alabama, Georgia, Florida, South Carolina, North Carolina,
Virginia, Kentucky, Maryland, West Virginia**

ARI - 647-281-4181

**British Columbia, Washington, Oregon, Idaho,
North Dakota, Wyoming, South Dakota, Montana**

VAUGHAN - 1-208-431-3748

Mexico, Central America

CARLOS - 437-230-9139





Our Academy brings together agricultural scientists, international and local experts and our own R&D team to share scientific and agronomic information. The focus is on training our distributors, dealers and field agronomists.



<https://www.nutriag.com/register/>

Key Products for Apples



SiliCalMax™ Analysis:

Calcium (Ca)	7.6%
Boron (B)	0.47%
Silicon (Si)	1.0%

Application Rate:

1 quart/acre at Bloom, Petal Fall, and with each Cover Spray during fruit development

Exclusive Technology:



PAC (PolyAldoCarbosate®):

Exclusive formula uses natural, plant-derived, carbohydrates to chelate nutrients for enhanced nutrient uptake and usage by the plant.



TruPhos Magnesium™ Analysis:

Phosphorus (P_2O_5)	29.0%
Potassium (K_2O)	5.0%
Magnesium (Mg)	4.0%

Application Rate:

2 quarts/ac at both 4 weeks & 2 weeks prior to harvest. For optimal sizing and colour, apply another 2 quarts/acre through the summer cover sprays

Exclusive Technology:



MOD (Matrix Ortho-Deprotonation™):

Our advanced manufacturing process employs unique sequestering technology which allows for the simultaneous inclusion of 100% orthophosphate with other nutrients while maintaining a true solution.

Data from the field - Colour

TruPhos products including TruPhos Magnesium™, TruPhos Calcium™ and TruPhos Platinum™ have shown improved fruit colour outcomes for difficult-to-colour varieties like Pink Lady and Honeycrisp.

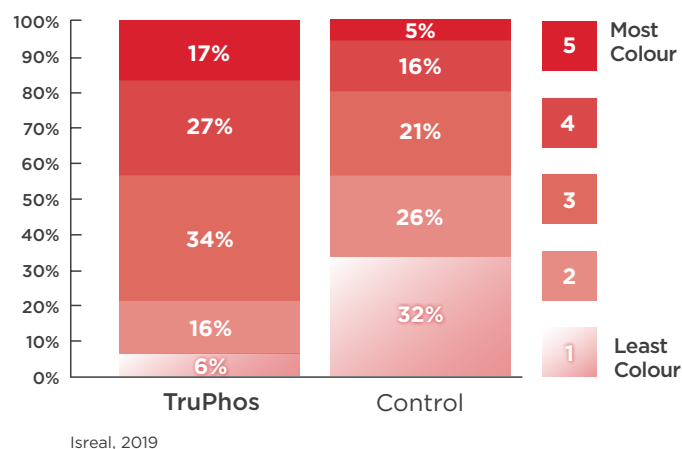
Apple Program

Crop: Pink Lady

Year: 2019

Location: Isreal

Application: 2 applications of TruPhos Platinum at 1 L/ac during early fruit set and bulking.



Apple Program

Crop: Honey Crisp

Year: 2014

Location: Vista Bella Farms, Nova Scotia

Application: 6 applications of TruPhos Magnesium at a rate of 2 L/ac sprayed throughout early fruit set and bulking stages.



TruPhos Magnesium - 2 L/ac, 6 applications

Data from the field - Quality

A NutriAg program for honeycrisp apples that included SiliCalMax™ delivered **higher yield, brix and fruit firmness** along with lower bitter pit incidence compared to a competitor program, across two locations in New York.

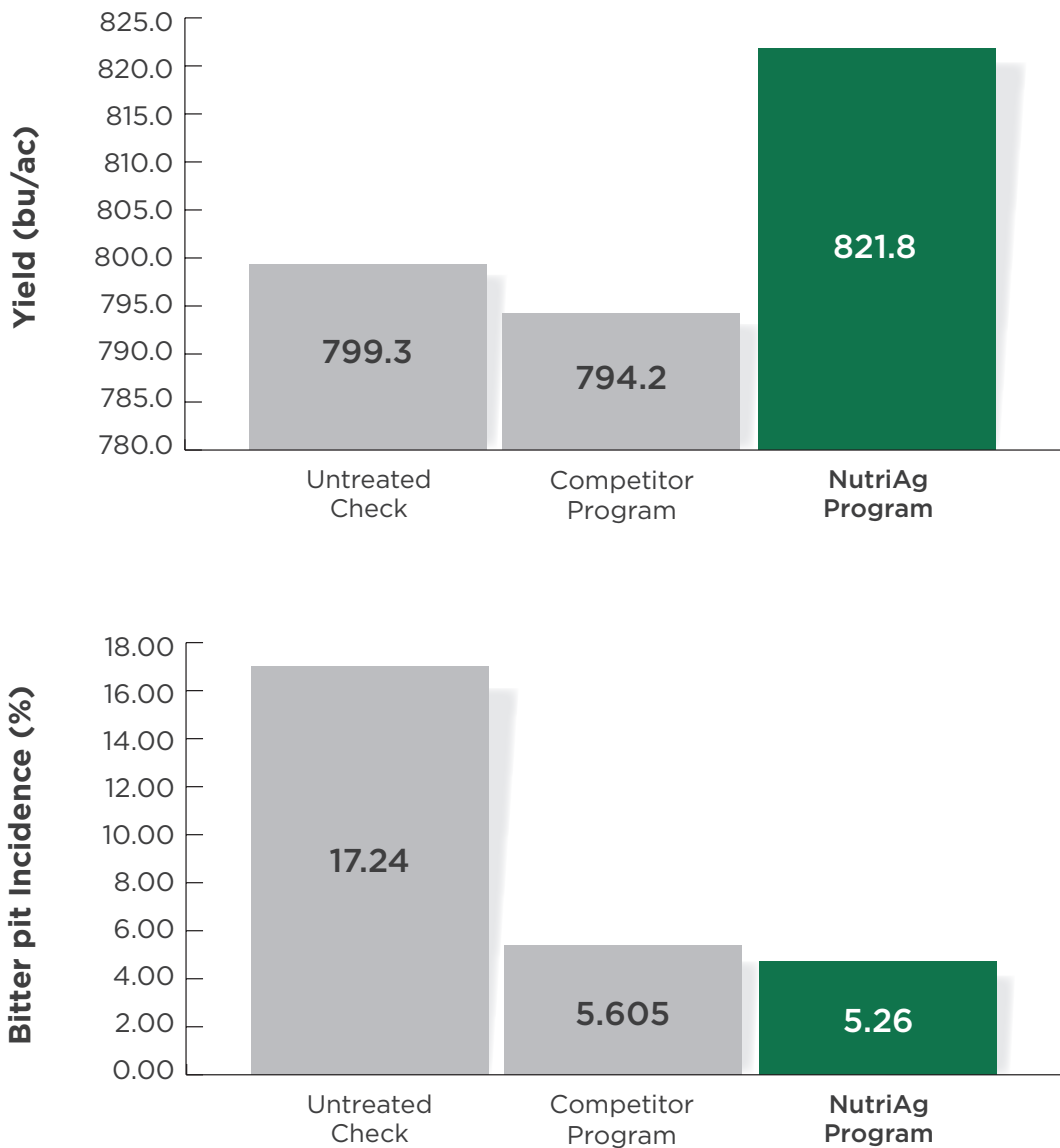
Program

Pink - 1 L/ac SiliCalMax + 0.5 L/ac ZincMax

Full Bloom - 0.3 L/ac BoronMax + 1 L/ac SiliCalMax + 0.5 L/ac ZincMax

Petal Fall - 1 L/ac SiliCalMax + 0.5 L/ac ZincMax + 1.5 L/ac TruPhos Magnesium

Cover Sprays (6 apps) - 2 L/ac SiliCalMax + 1 L/ac TruPhos Magnesium



Data from the field

Improve apple color with TruPhos products.

Fruit finish and color are key for high quality, high value apples. The desirable red color of apples develops as the outer cells produce and store pigments called anthocyanins. The production of anthocyanins is largely controlled by genetics, temperature, and exposure to light; factors that are largely out of our control. Fortunately, color development also responds to foliar application of our orthophosphate-containing TruPhos line of products. Boost the quality of your apples with TruPhos this season!

Effect of Pre-harvest Foliar Nutrition on Fruit Coloring - 4th Leaf Aztec Fuji (G11)

TruPhos Calcium™

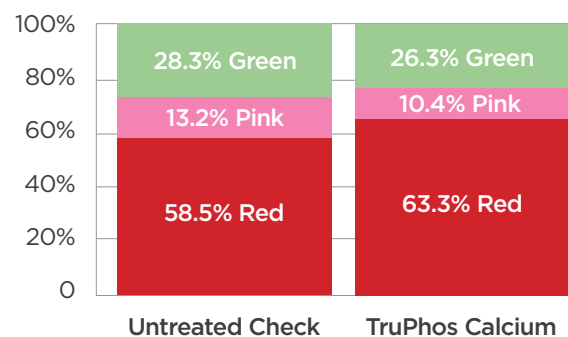
Crop: Apple (c.v. Aztec Fuji)

Date: 2021

Location: Michigan

Application: TruPhos Calcium was applied twice at 31 and 14 days before harvest at a rate of 2.0 qt/ac. Fruit were assessed according to industry standard color grading equipment.

Result: TruPhos Calcium increased the percentage of red and decreased the percentage of green apples compared to the untreated check.



TruPhos MeriStim™

Crop: Apple (c.v. Gala)

Date: 2016

Location: Chihuahua, Mexico

Application: TruPhos MeriStim was applied twice during fruit sizing at a rate of 1.0 qt/ac

Result: Increase in red color where TruPhos MeriStim was applied.

TruPhos MeriStim (2 Applications, 1.0 qt/ac)



TruPhos Pt™

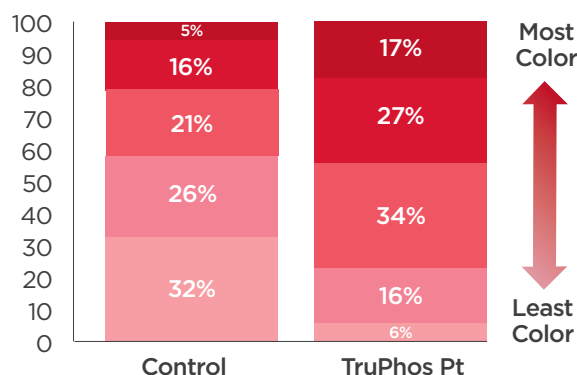
Crop: Apple (c.v. Pink Lady)

Date: 2019

Location: Israel

Application: TruPhos Pt was applied twice prior to harvest (two weeks apart) at a rate of 1.0 qt/ac.

Result: Increased color development in TruPhos Pt treated fruit compared to the control.



Redefine Crop Resilience.

Alexin® | Plant Activator® Line

Investing in the health of your crop pays off. By harnessing exclusive PAC™ and ACE™ technologies, Alexin® fertilizer delivers a more resilient crop, ready to maximize returns.



Analysis:

Potassium (K ₂ O)	8.0%
Calcium (Ca)	2.4%
Magnesium (Mg)	0.8%
Boron (B)	0.2%

Application rate:

1 L/ac (2.5 L/ha)

Crops:

All Row and table crops

Benefits:

- Provides the energy and nutrition needed to increase photosynthesis, strengthen cell walls and fortify abiotic stress tolerance.
- **Improves abiotic stress tolerance:** the specialized compounds in ACE™ enhance abiotic stress tolerance, improve overall crop health and increase yield.
- **Strengthens cellular structures:** Calcium strengthens cell walls and membranes to reduce physical damage.
- **Optimizes crop metabolism:** helps to main the optimal performance of various physiological/ metabolic processes including photosynthesis, water use efficiency and nutrient uptake and transport.

Exclusive Technologies:

- **PAC (PolyAldoCarbosate®):** Exclusive formula uses natural, plant-derived, carbohydrates to chelate nutrients for enhanced nutrient uptake and usage by the plant.
- **ACE (Active Cell Elicitor™):** Specialized compounds enhance abiotic stress tolerance, improve overall crop health and increase yield.



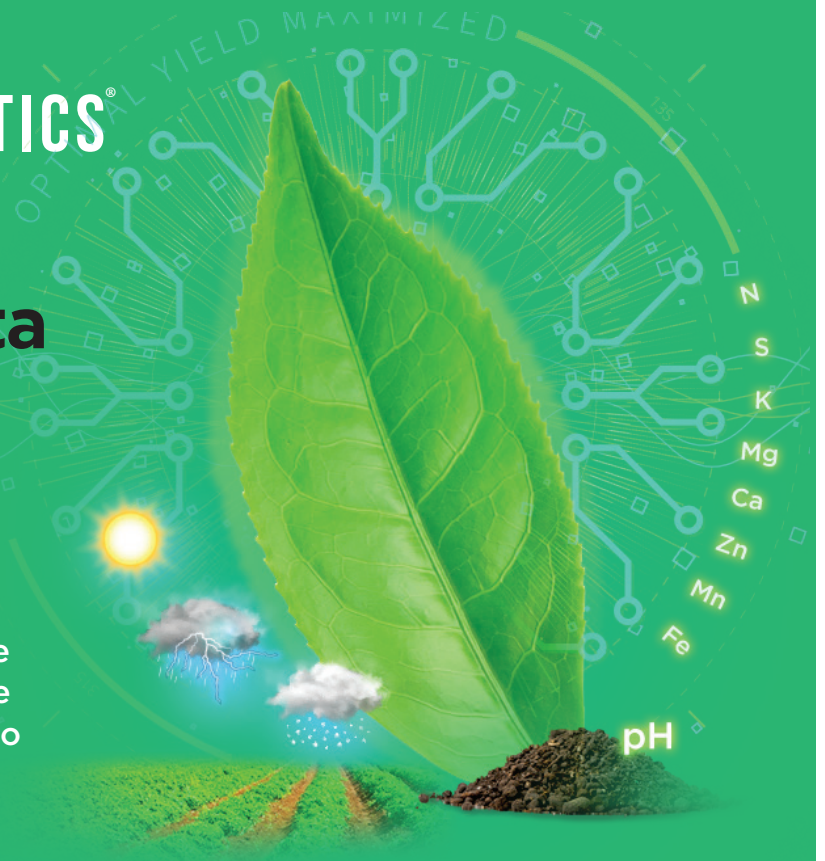


NUTRIANALYTICS®

Unlock your data for more profit.

We unlock crop data to give you the answers you need to grow the healthiest crops possible.

We combine agronomic knowledge with data analysis to help you make more informed growing decisions to improve marketable yield.



Our data analysts are farmers too.

Our team continues to innovate in the field and combine agronomy with data science to provide the best answers for farmers.

We built the technology.

We combine farming knowledge with technology to interpret the data using a method that is proven to improve crop quality and yield.



Artificial Intelligence
Engineered By NutriAg
Agronomists and Scientists.



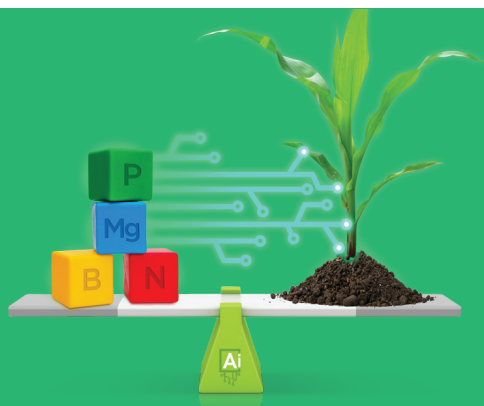
NUTRIANALYTICS



Innovators
in the field

To learn more about NutriAnalytics, call us at (416) 636-1555
or visit nutrianalytics.com

The information in this document has been provided in good faith. There are no warranties, expressed or implied, including any warranty of fitness or accuracy. The manufacturer assumes no liability if any issues arise. Trademarks within this document are of NutriAg Ltd. unless otherwise stated © 2022 NutriAg Ltd. For distribution in the USA.



Maximize yield with a tissue analysis.

Nutrient balance is the key.

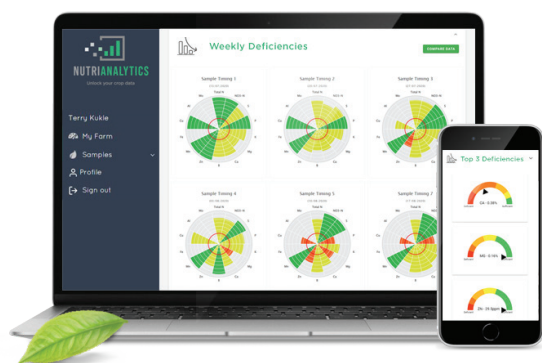
We predict marketable yield potential by identifying and quantifying nutrient imbalances and providing actionable, crop and region specific, nutrient recommendations.

When you increase a single nutrient, it can affect the availability of other nutrients, and ultimately, your potential yield. This is why we replace this guess work with expert recommendations so you can make informed growing decisions.

Call us today! (416) 636-1555

What we do:

- Predict marketable yield potential
- Provide unique crop specific foliar recommendations
- Maximize nutrient use efficiency
- Improve your ROI on inputs
- Keep it simple by leveraging traditional tissue sampling methods
- Help you grow the healthiest crops possible
- Easy to use dashboard of all your information



Visualize your data with your personal dashboard.

Access your crop profile anywhere. You can easily review nutrient reports, compare current data with historical critical values and receive your custom recommendations.



To learn more about NutriAnalytics, call us at (416) 636-1555 or visit nutrianalytics.com



The information in this document has been provided in good faith. There are no warranties, expressed or implied, including any warranty of fitness or accuracy. The manufacturer assumes no liability if any issues arise. Trademarks within this document are of NutriAg Ltd. unless otherwise stated © 2022 NutriAg Ltd. For distribution in the USA.



**Thank you for attending
our virtual Apple MEY 2022.**